

## **ADDENDUM NO. 5**

September 13, 2022

RE:           **ESSER III Additions & Renovations to West Elementary School**  
                  Gulfport School District  
                  Gulfport, Mississippi  
                  A/E Project No. 21-060

FROM:        Eley Guild Hardy Architects  
                  1091 Tommy Munro Drive  
                  Biloxi, MS 39532  
                  (228) 594-2323

TO:            Prospective Bidders

This Addendum forms a part of the Contract Documents and modifies the original Bidding Documents dated August 4, 2022. Acknowledge receipt of this Addendum in the space provided on the Proposal Form. Failure to do so may subject Bidder to disqualification.

**This Addendum consists of 1 page and 1 attachment.**

### **Changes to Project Manual**

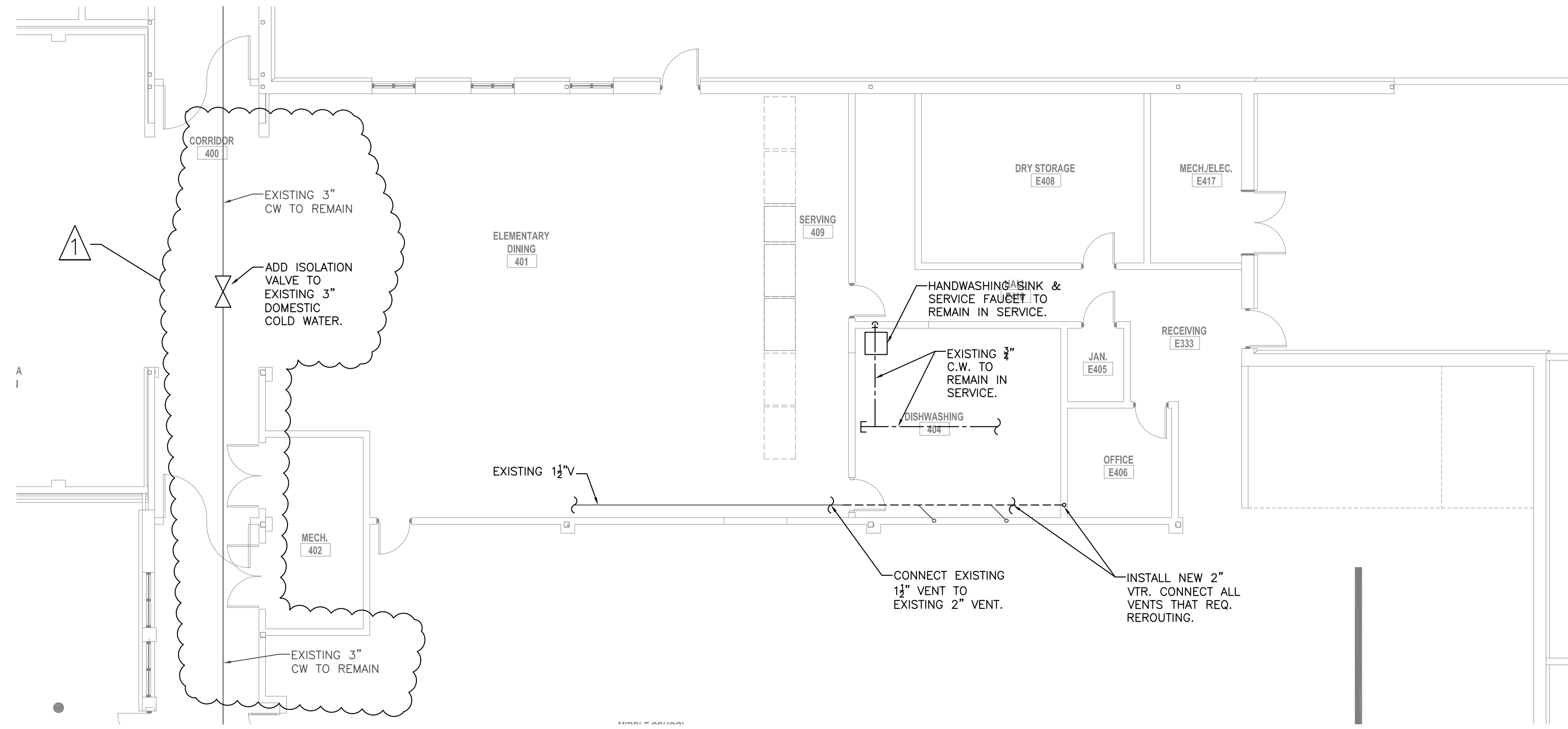
1. Section 07 41 13 – Standing Seam Metal Roof Panels: Under Part 2 – Products... 2.1 Manufacturers, add the following:

F. Dimensional Metals, Inc. (DMI) – Double-lock D20 Panel (Note: that roof panel color and shape shall match basis of design – provide custom color as required).

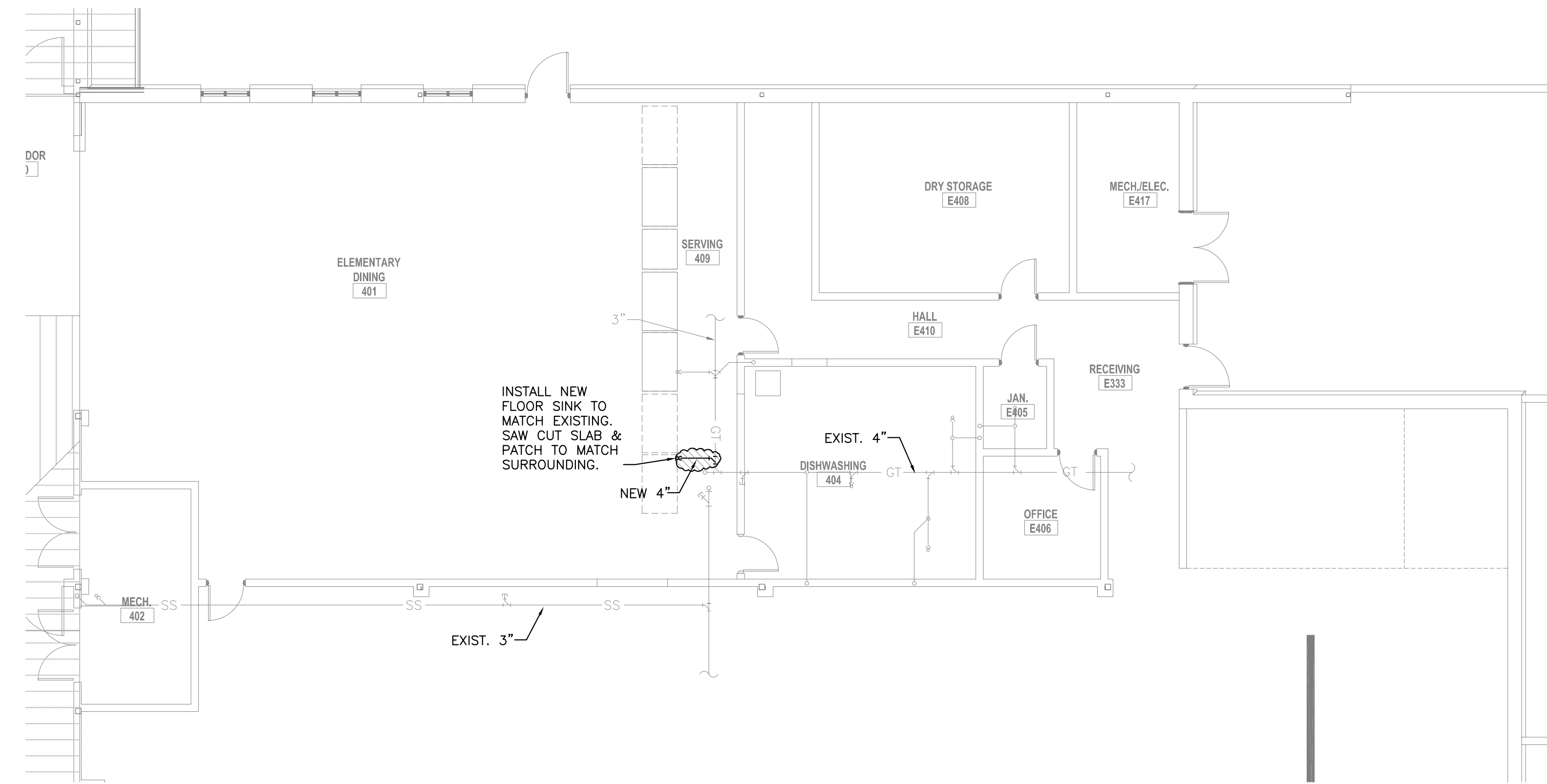
### **Changes to Drawings**

1. Sheet A311 – Wall Sections – Classroom: Change all notes on sheet that read “Open Cell Spray Foam” to read “Open Cell Spray Foam (2” minimum thickness)”.
2. Sheet P105 – Plumbing Plan – Cafeteria Serving/ Dishwashing: Delete sheet in its entirety and replace with the attached drawing “P105 – Plumbing Plan – Cafeteria Serving/ Dishwashing” with Revision 1 dated 09.02.2022.

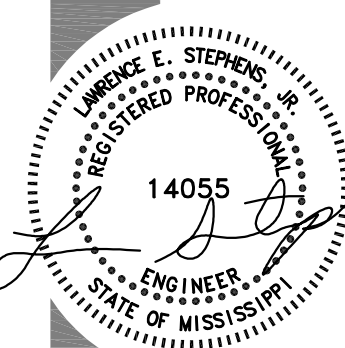
END OF ADDENDUM 5



**1** BASE BID: NEW ABOVE FLOOR PLUMBING PLAN - DISHWASHING / SERVING AREA  
1/8" = 1'-0"



**2** BASE BID: NEW BELOW FLOOR PLUMBING PLAN - DISHWASHING / SERVING AREA  
1/8" = 1'-0"



08-04-2022

REV.	DATE / DESCRIPTION
1	9-22-22 ADD ISOLATION VALVE

**ELEY GUILD HARDY** ARCHITECTS  
1091 TOMMY MUNRO DRIVE, BILOXI, MS 39532  
228.594.2323  
www.egh.ms

NUMBER: 21-060  
DATE: 08-04-2022  
DRAWN: J.W.  
CHECKED: LES